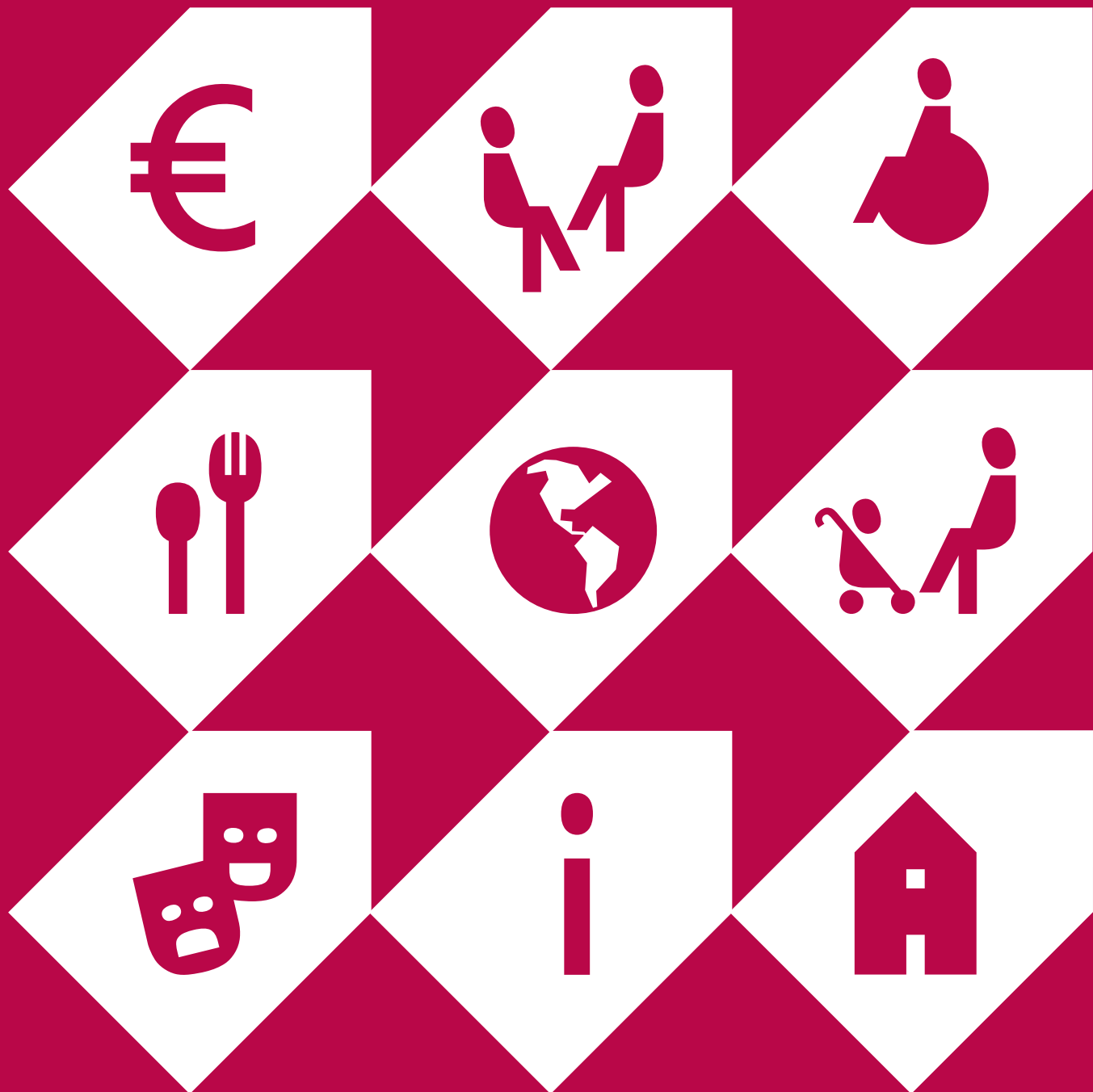


The Munich Student Union in Figures



Facts and Figures

Universities looked after by the Munich Student Union

UNIVERSITIES UNDER THE JURISDICTION OF THE MUNICH STUDENT UNION	NUMBER OF STUDENTS
Under full jurisdiction:	
Ludwig-Maximilians-Universität Munich	53,422
Technical University of Munich ¹	43,342
University of Applied Sciences Munich	18,364
Academy of Fine Arts Munich	848
University of Music and Performing Arts Munich	1,189
University of Television and Film Munich	365
Bavarian School of Public Policy Munich	- ⁵
Munich School of Philosophy	315
Hochschule der Bayerischen Wirtschaft	329
Catholic Trust University of Applied Sciences (Munich and Benediktbeuern) ³	2,539
University of Applied Sciences Rosenheim	6,130
Weihenstephan-Triesdorf University of Applied Sciences ²	3,619
University of Applied Languages (SDI) ⁴	642
Blocherer School ³	32
International School of Management (ISM) ³	453
Subtotal:	131,228
Only execution of BAföG:	
Munich Business School	567
University of Applied Management in Ismaning	3,854
Total:	135,082

¹ Excludes university sites in Straubing, includes university sites in Heilbronn

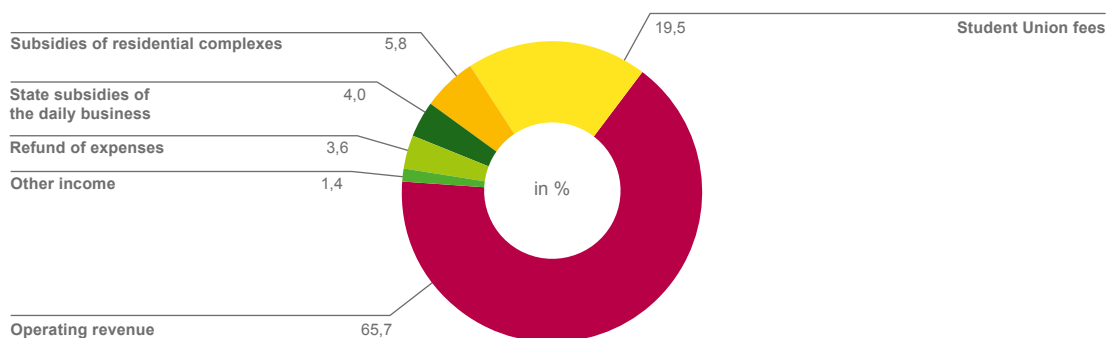
² Excludes university sites in Triesdorf

³ No execution of BAföG

⁴ Institute without execution of BAföG

⁵ included in TUM

The Munich Student Union's financing in 2019



The Munich Student Union in figures

	2019	2018
Students	131,228	129,407
thereof international students	28,438	25,777
Universities	15	15
Total assets	405,210,096 €	403,821,955 €
Transaction volume ¹	68,648,719 €	67,789,508 €
Number of personnel (December 31, 2019)	618	583
Office for Educational Support		
Applications	11,846	12,825
Students supported	8,214	9,619
Subsidies paid out	47.4 Mio. €	53.2 m €
Short-term loans	21,640 €	23,944 €
Long-term loans	121,300 €	336,410 €
Advisory Network		
Number of students seeking advice at:		
Psychosocial and Psychotherapeutic Advisory Service	3,197	2,974
Legal Advisory Service	1,731	1,688
Advisory Service Studying with a Child	166	181
General and Social Advisory Service	1,079	753
Mobile Advisory Service	600	828
Scholarship Advisory Service	843	1,341
BAföG Advisory Service	3,486	2,807
Study Loan Advisory Service	1,797	1,714
Student Coaching	597	532
Total number of students seeking advice	13,496	12,818
Child Care		
Facilities	20	20
Number of places	488 ²	501
University Gastronomy		
Meals served	4,784,394	4,353,847
Total yield – canteens (excl. canteen subsidy)	12,067,054 €	11,059,462 €
Canteen subsidy	2,842,814 €	2,605,712 €
Total costs of the canteens	19,265,447 €	17,941,672 €
Total yield – StuCafés	4,536,362 €	4,736,580 €
Total costs of the StuCafés	4,323,644 €	4,420,869 €
Total purchasing volume	6,926,568 €	6,452,553 €
Number of businesses	40	39
Student Accommodation		
Living quarters (including the ones under construction at the moment and those rented)	11,242	11,035
Income from rent (incl. use-related costs)	35.4 m €	35.3 m €
Students who moved in	5,638	5,716
Applications for accommodation	13,266	17,388
Applicants on the waiting list (December 31, 2019)	9,142	12,199

¹ Is made up of the following items in the income statement: 1. revenues, 2. Student Union fees for students, 5b) other operating income.

² The crèche "Uni-Kleckse" was reduced by one crèche group (12 places) due to the renovation of the building.

Mission Statement

The Munich Student Union supports students in all social and economic issues and provides the perfect framework for successfully completing one's studies without worries.

We support all students.

However, we reach out especially to students who have difficulties studying due to financial, social or health reasons.

We work closely with students and universities in order to constantly improve our offers and participate actively in the development of university life.

We see ourselves as a partner of the students, constantly developing our range of offers and engaging in active quality management.

We maintain a cooperative style of leadership, as our most important resources are our employees.

We are a family-friendly student union. We help our employees combine work and family, and help studying parents organize their studies.

Conscious of our responsibilities for this generation and those to come, we make a great effort to act in an environmentally sustainable way.

We live in a world of data protection and this topic is very important to us. In compliance with the data protection laws, we handle the information we receive and process, with great care.

We are continuously striving to improve our work processes to better the quality of our services and products.

... damit Studieren gelingt!

